

# INSTRUCTION

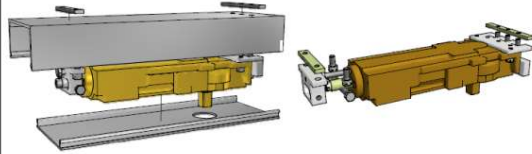
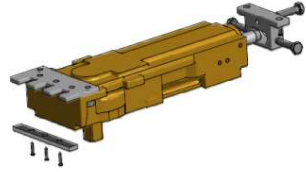
## NTS40 HIDDEN DOOR CLOSER IN THE ALUMINIUM TRANSOM

**NTS40**

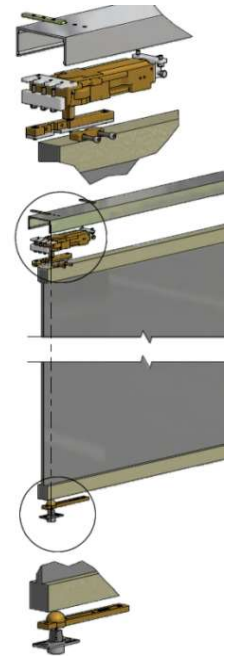
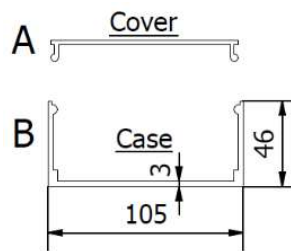
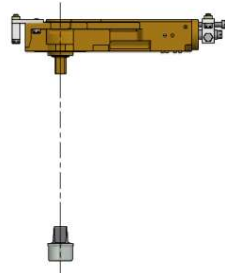
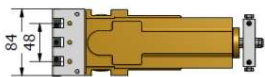
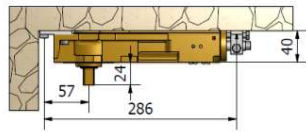
Art. NTS40  
38014  
EN 1154

**NTS40**

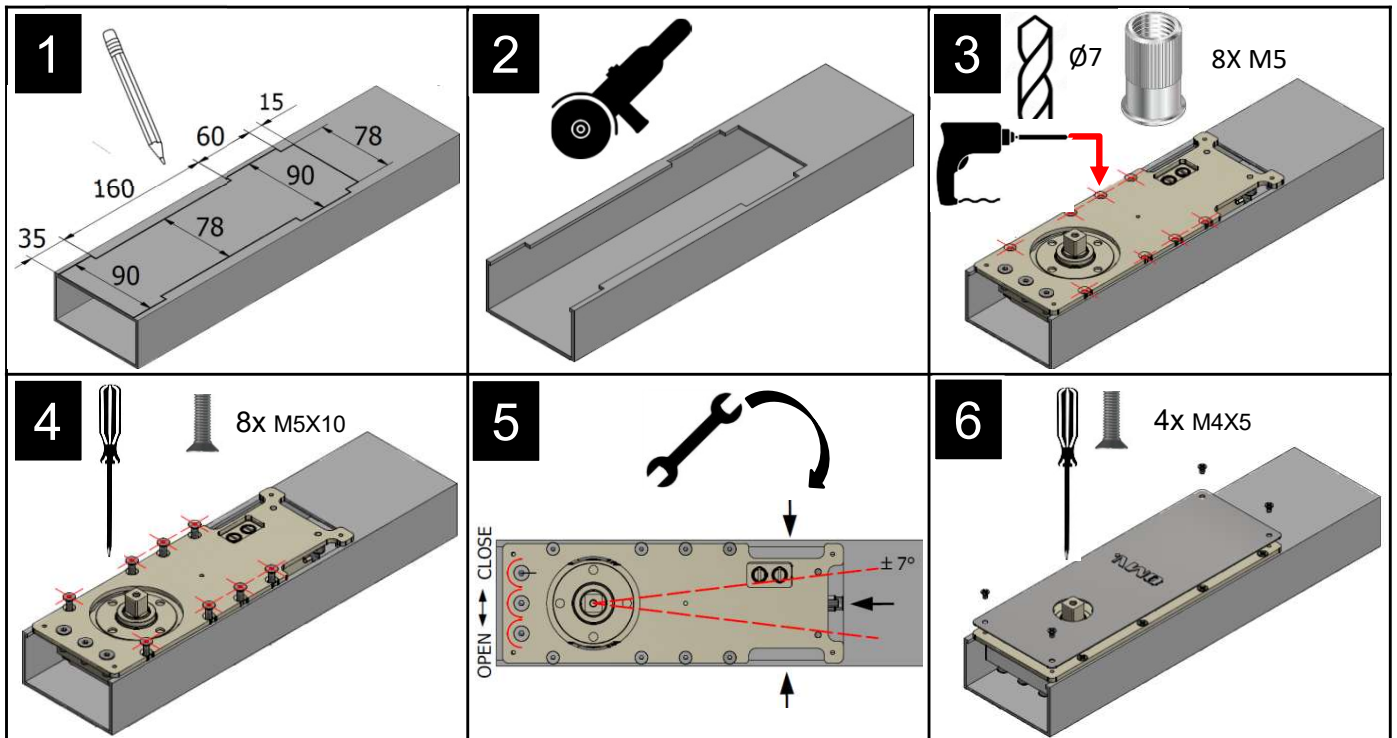
*Montaggio NTS40 serramento in metallo*  
*Assembly NTS40 metal door*



*Montaggio NTS40 porta legno/muro*  
*Assembly NTS40 wood door*



## NTS50 HIDDEN DOOR CLOSER WITH STEEL PLATE COVERED – IN THE ALUMINIUM TRANSOM



## INSTRUCTIONS

You will correctly instal our overhead hidden door-closer by using the relevant tools that we supply.

These aluminium accessories allow you the possibility to modify the position of the pivot of the product,orienting it in the way to guarantee a rotation between the upper pivot and the lower one,along the same axis.

**Important follow these informations.**