

# Art. NTS68

## FLOOR CLOSER

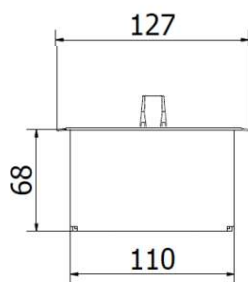
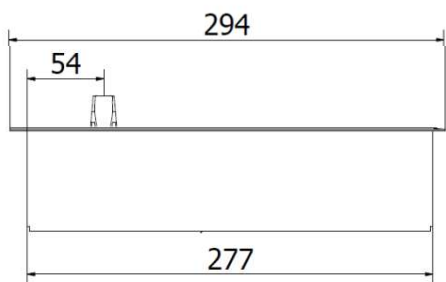


**1 MILLION CYCLES TESTED**

PATENTED AND TESTED  
IN ACCORDING TO THE EUROPEAN STANDARD  
UNI-EN 1154:2003



THERMOSTATIC OIL -18°C +50°C  
TESTED TO ENSURE  
STABLE CLOSING TIMES  
TO THE DIFFERENT TEMPERATURE



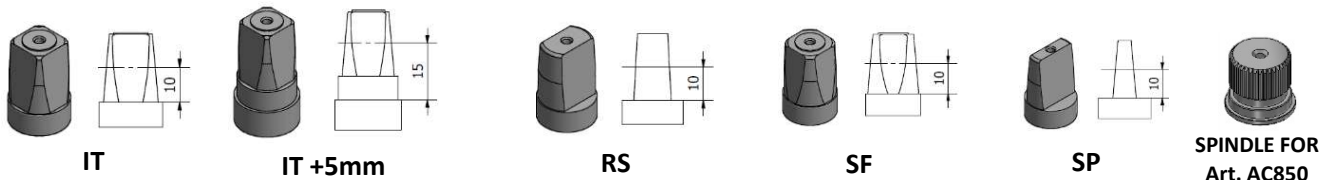
**50150 XX**

HOLD OPEN  
0=90°  
1=110°  
2=SENZA FERMO

SPINDLE  
IT=ITALIAN  
RS=GERMAN  
SP=SPANISH  
FR=FRENCH

=F1→F3  
N=F3  
P=F1→F4 (HEAVY DUTY)

### SPINDLES:



SERIES	ARTICLES	FORCE	HOLD OPEN	WEIGHT [KG]	WIDTH UP TO [MM]
<b>NTS68</b>	50150	F2→F3	90°	180	700-1100
	50151	F2→F3	110°	180	700-1100
	50152	F2→F3	NO STOP	180	700-1100
	50150N	F3	90°	150	900-1000
	50151N	F3	110°	150	900-1000
	50152N	F3	NO STOP	150	900-1000
<b>HEAVY DUTY</b>	50150P	F2→F4	90°	220	900-1250
	50151P	F2→F4	110°	220	900-1250
	50152P	F2→F4	NO STOP	220	900-1250
	ARTICLE	DESCRIPTION	FINISH	CODE	
		COVER	STAINLESS STEEL	INOX	
			POLISHED BRASS	OT.LUX	
		BOX CASE	STEEL PAINTED	STANDARD	
			STAINLESS STEEL 304	BOX CASE STAINLESS STEEL	

\* THE STANDARD PACKAGE INCLUDES THE STANDARD BOX CASE AND STAINLESS STEEL COVER AISI 304