

Art. TS70

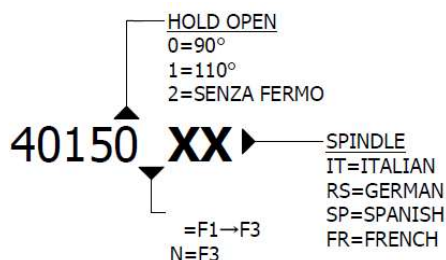
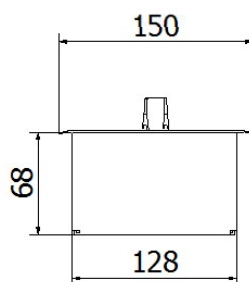
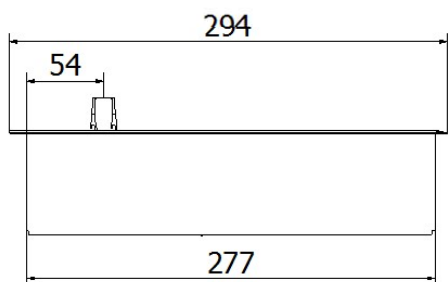
FLOOR CLOSER



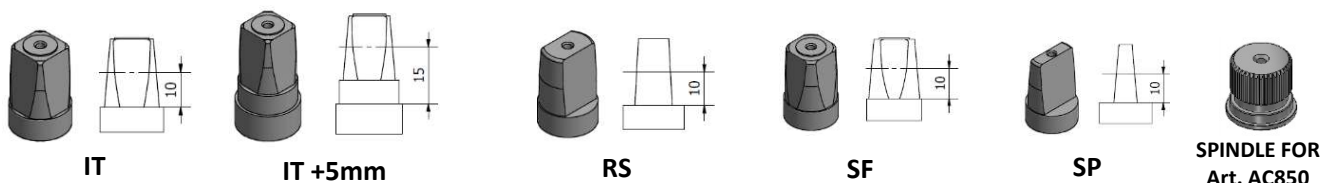
1 MILLION CYCLES TESTED
 PATENTED AND TESTED
 IN ACCORDING TO THE EUROPEAN STANDARD
 UNI-EN 1154:2003



THERMOSTATIC OIL -18°C +50°C
 TESTED TO ENSURE
 STABLE CLOSING TIMES
 TO THE DIFFERENT TEMPERATURE



SPINDLES:



SERIES	ARTICLES	FORCE	HOLD OPEN	WEIGHT [KG]	WIDTH UP TO [MM]
TS70	40150	F2→F3	90°	180	700-1100
	40151	F2→F3	110°	180	700-1100
	40152	F2→F3	NO STOP	180	700-1100
	40150N	F3	90°	150	900-1000
	40151N	F3	110°	150	900-1000
	40152N	F3	NO STOP	150	900-1000
	ARTICLE	DESCRIPTION	FINISH	CODE	
	COVER	STAINLESS STEEL	INOX		
		POLISHED BRASS	OT.LUX		
	BOX CASE	STEEL PAINTED	STANDARD		
		STAINLESS STEEL 304	BOX CASE STAINLESS STEEL		

* THE STANDARD PACKAGE INCLUDES THE STANDARD BOX CASE AND STAINLESS STEEL COVER AISI 304